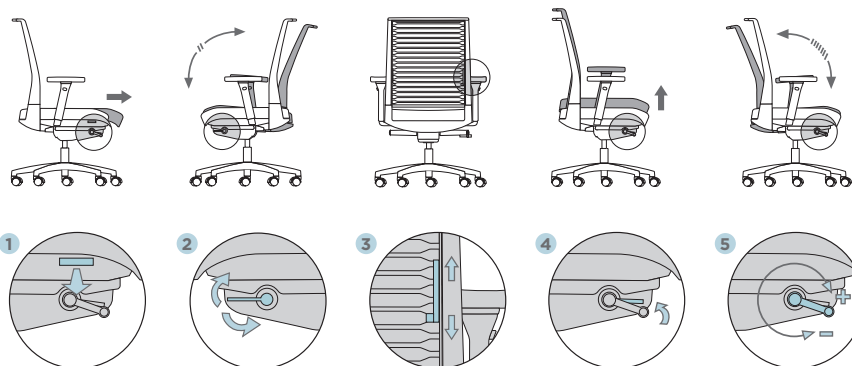




SLAT WORK CHAIR



FEATURES



2 types of backrest
 · backrest 52
 · backrest 62 with and without headrest

Lumbar support height adjustment

Headrest in option

2 models of armrest

Polyamide or polished aluminum support (option)

Backrest lock

Seat depth adjustment

Pressure control

Seat height

Castors Ø 60

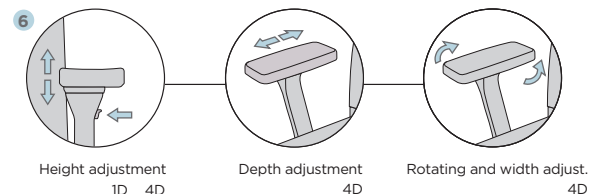
NE polyamide base.
 Painted or polished aluminum.



OPTIONS

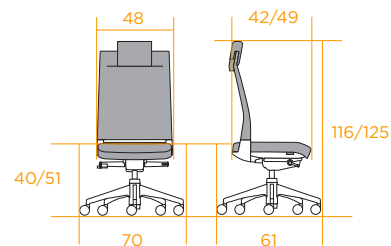
Armrest

- Height adjustment (1D · 4D: 100 mm, 11 positions)
- Depth adjustment (4D: 40 mm, 5 positions)
- Rotating and width adjustment 4D: 360° (-30°, 0°, +30°)

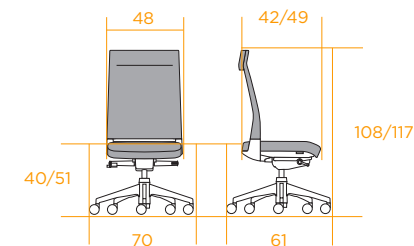


DIMENSIONS

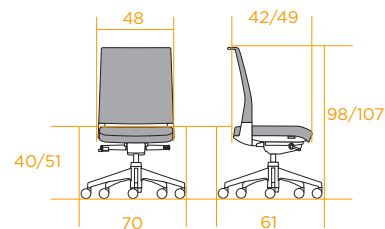
1 • Backrest 62 with headrest



2 • Backrest 62



3 • Backrest 52



		• 1 •	• 2 •	• 3 •
kg	Weight in Kg.	16,2	15,4	14,0
Ta	Seat fabric	0,67	0,67	0,67
Tr	Backrest fabric	1,30	0,80	0,68
Pa	Seat leather	0,53	0,53	0,53
Pr	Backrest leather	1,23	0,73	0,62



SLAT WORK CHAIR



DESCRIPTION

BACKREST

Maximum backrest opening 23°.

Lumbar support in mesh backrest consisting on 4 polyamide slats, adjustable in height 50 mm with 3 positions.

Lumbar support in the upholstered backrest by activating 2 independent handles that are placed on the slats; these will change tension providing greater support to the lower back moving along 50 mm in multiple positions.

The backrest is a polyamide perimeter frame, fixed directly to the mechanism, thus obtaining a softer response

Mesh back: the tension of the mesh allows a correct support of the user's back. It does not deform. Fabric touch. Equipped with 4 slats in the lumbar area.

Upholstered backrest: equipped with 16 elastically deformable slats along the entire length of the backrest that flex independently of each other, thus guaranteeing the adaptation of the backrest to the anatomy of the user's back.

SEAT

Adjustable in depth 70 mm with 8 positions.

Seat: injection polypropylene support plus thick flexible foam of 55 mm thickness and a density of 45 kg/m³, onto which the fabric is fitted.

MECHANISM

Spring-action synchro mechanism. Angle 23° back/ 8,5° seat.

It can be locked in 5 position or permanent contact with non-return system.

Pressure set by a lever to customise the pressure of the backrest.

BASE

Polyamide with fiber: Ø640 mm, black finish.

Aluminum: Ø700 mm, polished or painted epoxy polyester.

Soft and hard floor castors ø 60, black color.

Option conductive castor ø 60.



ARMRESTS



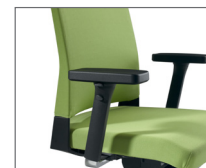
4 ARMREST 1D



1 ARMREST 1D
Flexible armrest support



2 ARMREST 4D
Polyamide support



3 ARMREST 4D
Polished aluminium support



RECYCLABILITY RATE



CERTIFICATIONS AND STANDARDS

tecnaliacertified
PRODUCTOS CERTIFICADOS DE MOBILIARIO
RT.01 MOBILIARIO - M0F04
UNE-EN 1335