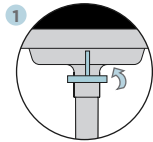




# SLAT4C MEETING AND VISITOR



## FEATURES



**2 • 4 legged chair**  
Stackable (only the  
armless option)

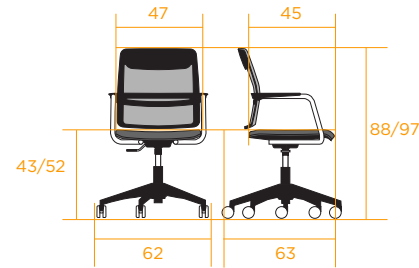


**3 • Sled base chair**  
Stackable

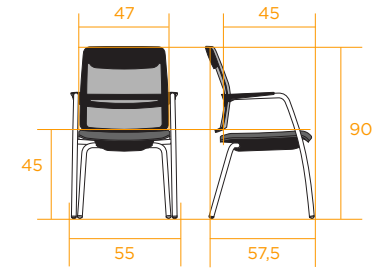


## DIMENSIONS

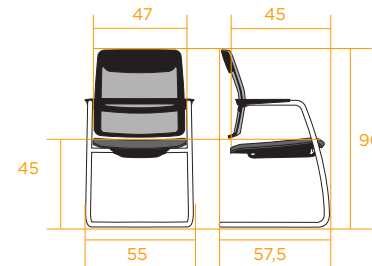
**1 • Swivel chair**



**2 • 4 legged visitor chair**



**3 • Sled base visitor chair**



	• 1 •	• 2 •	• 3 •
kg Weight in Kg.	9,80	8,60	17,6
d Dimensions	100x60x60	100x60x60	100x60x60
Ta Seat fabric	0,65	0,65	0,65
Tr Backrest fabric	0,55	0,55	0,55
Pa Seat leather	0,49	0,49	0,49



## RECYCLABILITY RATE

**1 • Swivel chair**



**2 • 4 legged chair**



**3 • Sled base chair**





## SLAT4C MEETING AND VISITOR

# TECHNICAL SHEETS



### DESCRIPTION

#### BACKREST

Ergonomically shaped perimeter frame made of highly resistant and flexible fiber-glass injected polyamide. It may be upholstered in technical mesh with the option of lumbar support or in fabric with lumbar support. In both cases, it will be clipped to the backrest frame to facilitate reupholstering.

Fixed to the seat, on both sides, by high-resistance  $\varnothing 25 \times 2$  mm steel tubes, curved and shaped, finished in epoxy polyester powder coating.

#### SEAT

Wooden support with glued and ergonomically shaped beech layers, 10 mm thickness, with a  $47 \text{ kg/m}^3$  density rubber foam and a thickness of 27 mm, onto which the fabric is fitted.

#### SWIVEL BASE

Polyamide with fiber:  $\varnothing 640$  mm, black finish.

Aluminum:  $\varnothing 700$  mm, polished or painted epoxy polyester.

Soft and hard floor castors  $\varnothing 60$ , black color.

Option conductive castor  $\varnothing 60$ .

#### 4 LEGGED OR SLED BASE

$\varnothing 25 \times 2$  mm steel tube, high-resistance, curved, shaped and welded, finished off with M8 threaded studs, where the optional polyamide technical wheels are attached in the case of the 4-legged chair and studs in the case of the sled base.



### CERTIFICATIONS AND STANDARDS

**tecnaliacertified**  
PRODUCTOS CERTIFICADOS DE MOBILIARIO  
RT 01 MOBILIARIO - MOP34

UNE-EN 16139

#### ARMS

The arms are made of high-resistance  $\varnothing 25 \times 2$  mm steel tubes, curved and shaped, finished in epoxy polyester powder coating or chrome. With polyamide with fiber-glass injected armpads.



▲ SLAT4C ARMREST